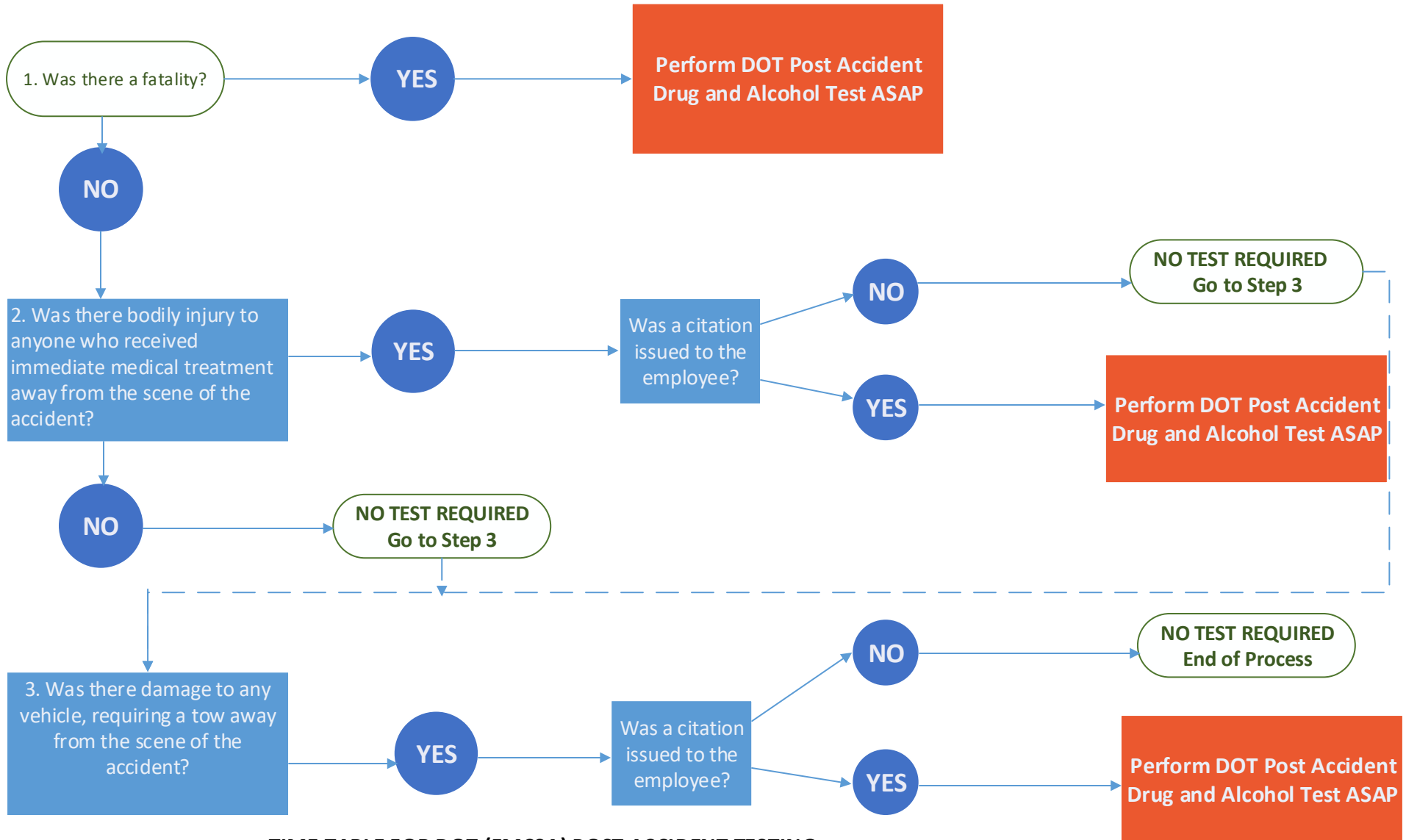


If the employee has a CDL License and operates a vehicle licensed over 26001 pounds GVW, a vehicle that transports 16 or more passengers or placarded materials, **Proceed to Number 1** in the decision tree below:



TIME TABLE FOR DOT (FMCSA) POST ACCIDENT TESTING

If required, complete an alcohol test within two hours of an accident. Attempts to conduct an alcohol test are PROHIBITED after eight hours. (The employer must document why a test was not accomplished.)

If required, complete a drug test within two hours of an accident. Attempts to conduct a drug test are PROHIBITED after 32 hours. (The employer must document why a test was not accomplished.)

