

# 'Eye'identifying Drug Abuse Know the Signs:



## Depressants



Pinpoint Pupils  
Nodding Out

### Opiates

Narcotics— Including Oxycodone (Percocet), Hydrocodone (Vicodin), Fentanyl, Methadone, Morphine; Heroin

#### Other Signs of Use:

- Nodding Out
- Decreased heart rate
- Decreased breathing
- Itching/Scratching
- Deepening voice
- Change in sleep

#### Signs of Withdrawal:

- Flu-like symptoms
- Mood swings. Sleep issues
- Rapid pulse, Coughing
- High blood pressure
- Dilated pupils
- Signs can last up to 18 mo

#### Signs of Overdose:

- Slow and shallow breathing, - sounds like deep snoring
- Irregular breathing
- Irregular heart Rate
- Clammy skin
- Convulsions, Coma
- Nausea and vomiting
- Anxiety



Pinpoint Pupils Glossy Eyes

### Benzodiazepines

Depressants including: Xanax, Valium, Ativan & Klonopin

#### Other Signs of Use:

- Double Vision
- Drowsiness
- Change in Behavior
- Slowed speech
- Loss of Memory/Time

#### Signs of Withdrawal:

- Dilated pupils
- Possible Death
- Headaches & tremors
- Muscles twitching
- Inability to focus

#### Signs of Overdose:

- Slow and shallow breathing,
- Clammy skin
- Dilated Pupils



Glassy Watery Bloodshot  
Normal pupils if not mixed with other drugs

### Alcohol

Beer, Wine & Hard Liquors

#### Other Signs of Use:

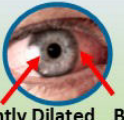
- Blurred Vision
- Unsteady Walking
- Slowed, Slurred Speech
- Vomiting
- Blackouts

#### Signs of Withdrawal:

- Similar to Benzodiazepines
- Possible Death

#### Signs of Overdose:

- Double or blurred vision
- Low and shallow breathing
- Increased reaction time
- Mixing with opiates further suppresses breathing



Slightly Dilated Bloodshot Eyes

**Marijuana—**  
(Hallucinogen and Depressant effects)

#### Other Signs of Use:

- Tunnel Vision
- Slower information processing
- Slower coordination

#### Signs of use cont..

- Increased Hunger
- Slowed Speech
- Laughing
- Memory Issues

#### Signs of Withdrawal

- Headache, Shakiness, Sweating
- Stomach pains and nausea

#### Signs of Overdose

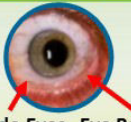
- When mixed with other drugs increases likelihood of overdose.

## Hallucinogens



LSD & Spice:  
Dilated Eyes

- **LSD-** Blurred Vision, Flashback long after use, Tremors, Tingling fingers & toes, facial flushing ; Overdose: Seizures, Hallucinations, Loss of consciousness, Intense anxiety, Rapid mood swings, Vomiting
- **Spice— Synthetic drugs often quite unpredictable side-effect-** Altered perception, relaxation, psychosis, rapid heart rate, vomiting violent behavior, suicidal thoughts. Overdose: rapid heart rate (may cause death), acute kidney injury
- **Kratom— Differing side-effects—Lower doses: stimulant effects; Higher doses— sedative effects-** 'Wobbly eyes', excessive watering, increased urination, itching sweating, Overdose: Kratom by itself is not associated with fatal overdose, but some forms of the drug packaged as dietary supplements can be laced with other compounds and/or mixing with other drugs may cause death.



Wide-Eyes Eye Balls Shake

**MDMA, Ecstasy/  
Molly** (Stimulant & Hallucinogen)

#### Other Signs of Use:

- "Shutter Vision"
- Wide Awake
- Constant Talking
- Uncontrolled body movements
- Chewing/Grinding teeth

#### Signs of Withdrawal:

- Agitation
- Increased body temperature
- Hallucinations
- Convulsions, apathy
- Long periods of sleep
- Disorientation

#### Signs of Overdose:

- Very high body temperature— body cannot regulate
- Fainting spells
- Seizures
- Loss of consciousness

## Stimulants



Dilated Pupils Glossy Eyes

Amphetamines - (Adderall, Ritalin), Cocaine (eye anesthetic) Meth

#### Other Signs of Use:

- Increased heart rate
- Loss of appetite
- Insomnia
- Nervousness & jitter
- Severe headaches
- Muscle twitches, tremors

#### Signs of Withdrawal:

- Coughing
- High blood pressure
- Severe depression can last for months
- Possible death

#### Signs of Overdose:

- Cardiac Issues
- Stroke, seizures
- Hallucinations
- Fainting
- Coma

## Mixing Drugs



Mixing drugs does not increase the 'high' but often exponentially confuses the brain and body. The brain becomes overwhelmed as it tries to process multiple, conflicting messages. Mixing a small amount of marijuana & alcohol can cause a person to seem and be highly intoxicated as though they have taken several shots instead of a few beers. Another example, mixing alcohol with opioids suppresses the breathing in two different ways at different times which is why a person should never 'sleep it off' and seek help immediately.

